



# Environmental Project Summary – September 2006

Task Name	2004				2005				2006				2007				2	
	Q1	Q2	Q3	Q4	Q1	Q2	Q3	Q4	Q1	Q2	Q3	Q4	Q1	Q2	Q3	Q4	Q1	Q2
<b><u>DUST</u></b>																		
Coal Dust Control: Train Unloading - COMPLETE																		
Coal Dust Control: Ground Level Emission Control - COMPLETE																		
Coal Dust Control: 1317/1318 Coal Transfer Point (At B/house) - COMPLETE																		
1652/1646 Alumina Transfer Point (Island A Frame) COMPLETE																		
Boiler Particulate Emission Reduction																		
Calcoiner Project - COMPLETE																		
Kiln Demolition - COMPLETE																		
Lime Kiln Demolition - COMPLETE																		
Alumina Loader Loading Shute																		
<b><u>ODOUR REDUCTION</u></b>																		
Red Mud Dam Destratification Units - COMPLETE																		
Odour Reduction: Heater Vents - COMPLETE																		
Odour Reduction: Relief Tank																		
<b><u>ALKALI EMISSION REDUCTION</u></b>																		
Fill Tanks 1 to 2																		
Tertiary Seed Surge Tanks 1 & 2 - COMPLETE																		
Secondary Seed Surge Tanks 1 to 4																		
TT Hosing - COMPLETE																		
Primary Feed Tanks																		
Unspecified projects																		
<b><u>NOISE REDUCTION</u></b>																		
Minimise Boiler Relief Valve Noise - COMPLETE																		
Environmental Monitoring System																		



# Residue Disposal Project

## Progress

- Detail design continuing
- Bulk earthworks for Processing Facility and Access Road commenced
- Processing Facility to be designed and constructed by Outokumpu

## Commissioning

- Planned for November 2007



# Residue Disposal Project

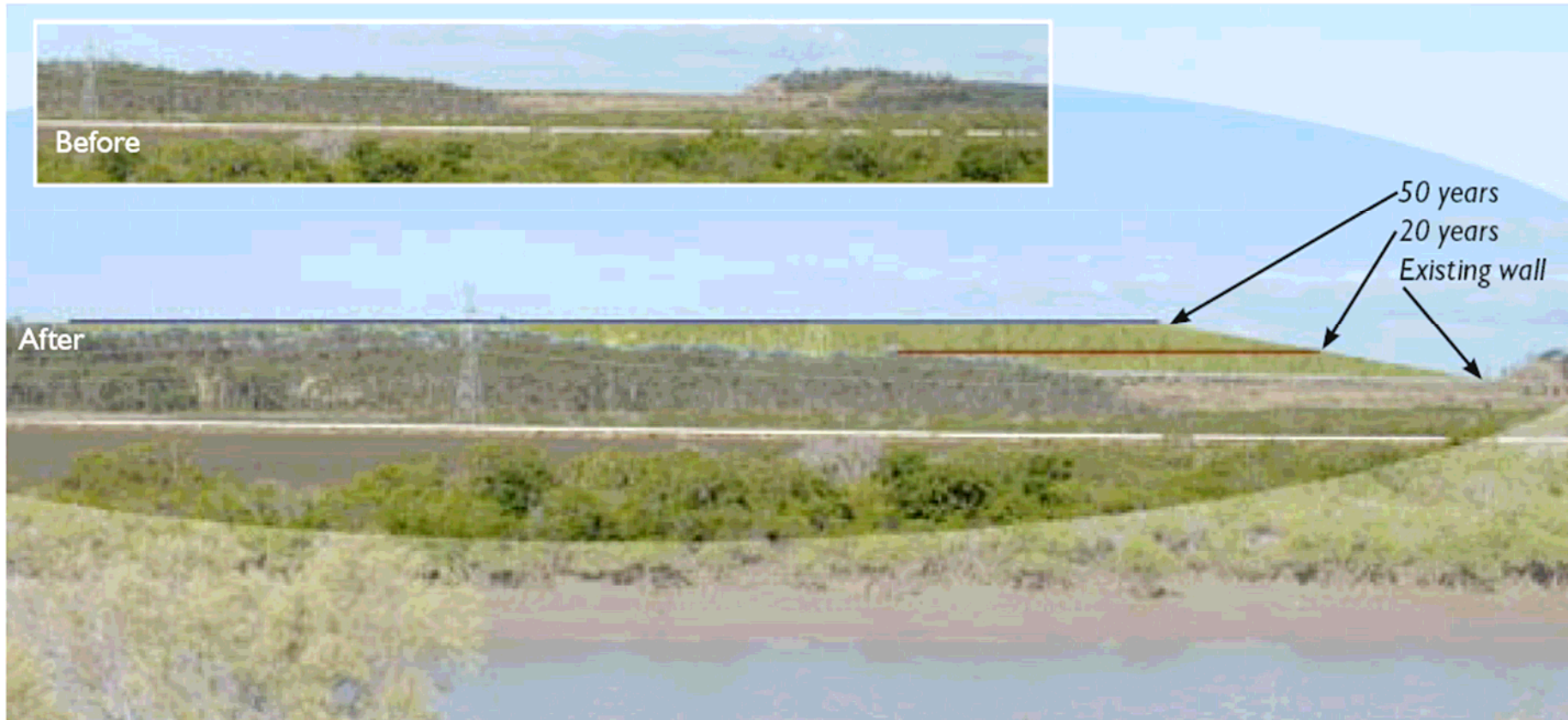




QUEENSLAND ALUMINA LIMITED



## Residue Disposal Project



*Looking from Benaraby Road between Gladstone and Tannum Sands turnoff.*

Safer. Cleaner. Better.



QUEENSLAND ALUMINA LIMITED



## Package Boiler Delivery





QUEENSLAND ALUMINA LIMITED



## Package Boiler Delivery

