



# RMD Long Term Strategy

- Current Situation
  - RMD 1 decommissioned 1980's
  - RMD 2 continues to be active
  - 0.8t Red Mud for each tonne of alumina
  - Using downstream construction of dam walls capacity of dam is reached in 2007



# RMD Long Term Strategy

- 50 year Strategy
  - Reuse of RMD 1 & eventual joining of RMD 1 and 2
  - Conversion to upstream construction (constructing walls over top of previously laid mud)
  - Upgrade saltwater pumps and New processing facility (to facilitate “thickening of mud”)
  - Related infrastructure and support (ie pipes, roads, power etc)
  - No change in licence conditions
- Status
  - Approved by Board at February meeting



# RMD Long Term Strategy

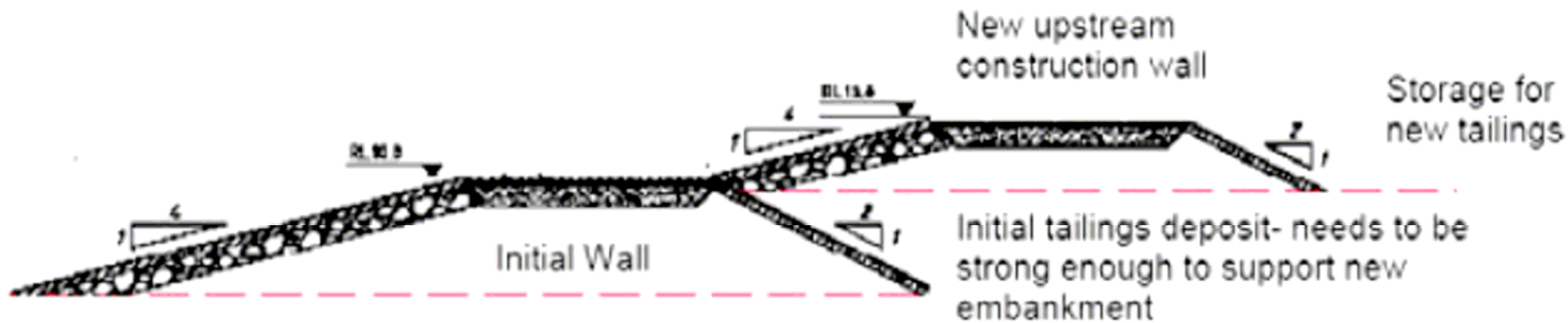
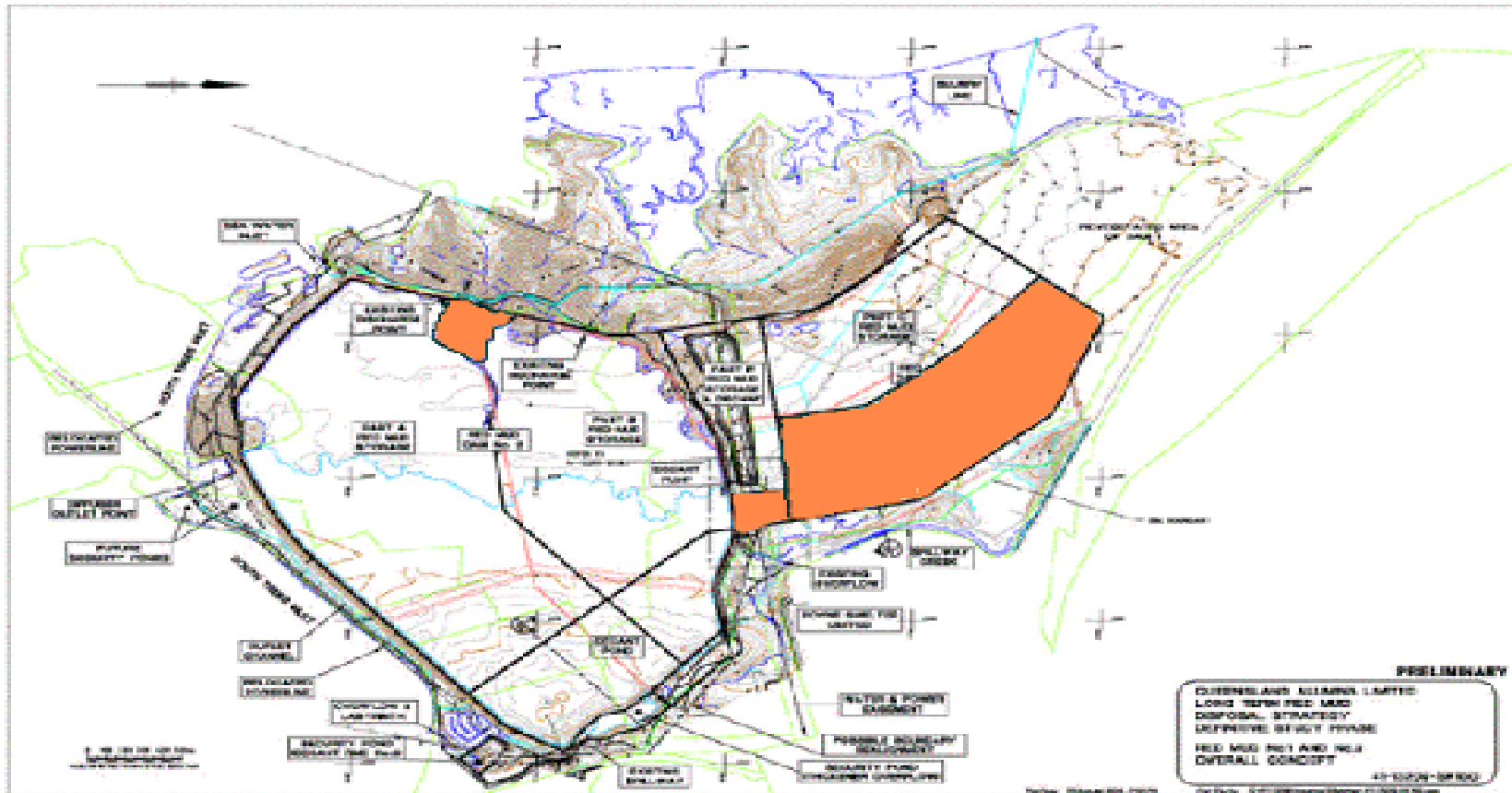


Figure 3. The Upstream Construction Technique



## Stage 1 - 2006 to 2007

**Construction of Area D, Distribution Piping, Decant Pond, Salt Water Supply and Process Plant**

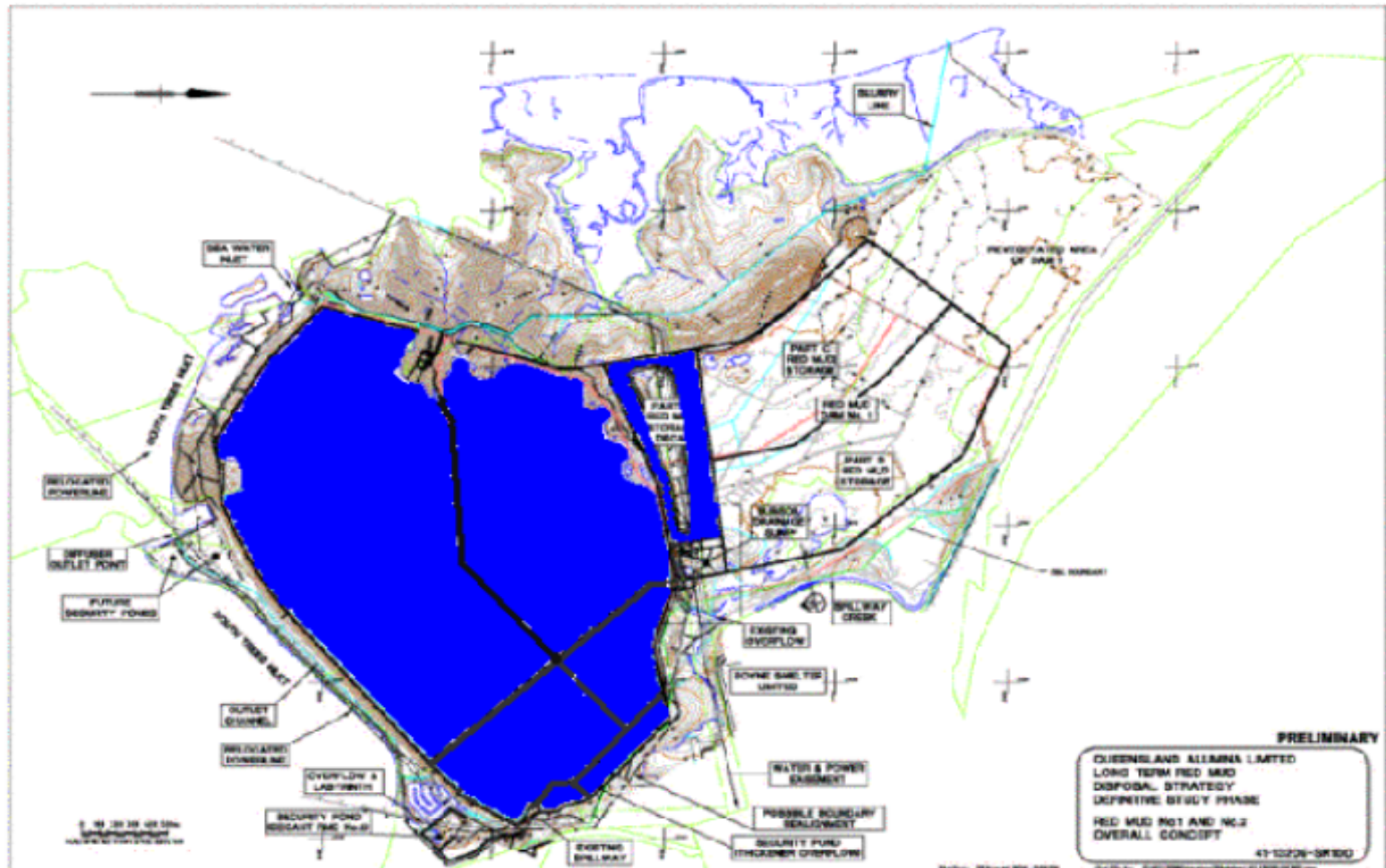






### Stage 3 - 2010 to 2012

Construction of Areas A & B, Security Ponds, Water & Power Line Relocation and Process Plant Discharge Pipeline





# RMD Long Term Strategy

- Environmental issues
  - Vegetation and fauna
  - Cultural Heritage
  - Community Communication
  - Quarry materials
  - Tidal works & minor marine plant works



# RMD Long Term Strategy

- Findings to date:
  - Black Breasted Button Quail habitat in area between dam and BSL conveyor
  - Brigalow Scalyfoot (legless lizard) in area between dam and BSL
  - Endangered vegetation in a few small areas

Commitment to manage and not disturb these areas by QAL

